

**BUFT – BUNDESVERBAND FREIER THEATER E. V.**

Tel.: +49-(0)30-20 21 59 99-0  
www.freie-theater.de, post@freie-theater.de  
Board: Alexander Opitz, Eckhard Mittelstädt, Alexandra Schmidt  
Managing director: Martin Heering  
The Bundesverband Freier Theater e. V. (Federal Association of Independent Theatres) represents the interests of performing arts professionals and institutions of all genres. It speaks on the behalf of ca. 1.000 companies and theatres, which are organized in individual state associations. The federal association informs and councils federal institutions and political bodies as well as its members on the conditions and development of performing arts.



**CHRISTINE VOGT – GRENZBEREICHE-THEATER**

Tel.: +49-(0)30-68 07 30 23  
www.grenzbereiche-theater.de, vogt@grenzbereiche-theater.de  
Christine Vogt is an integrative theatre director and cultural scientist MA. She teaches at FH Potsdam and works in theatre ensembles for people with disabilities or dementia.

**DACHVERBAND TANZ DEUTSCHLAND**

Tel.: +49-(0)30-37 44 33 92  
www.dachverband-tanz.de, info@dachverband-tanz.de  
Contact: Christina Menne, Michael Freundt  
Dachverband Tanz Deutschland is an umbrella association and lobby group for German cultural and educational policy concerning dance. It represents the leading dance associations and institutions, as well as a number of outstanding individual artists.

**DEPARTMENT**

Tel.: +49-(0)30-40 50 59 85, Fax: +49-(0)30-40 50 59 86  
www.dep-art-ment.com, info@dep-art-ment.com  
Contact: Harriet Lesch, Katharina von Wilcke  
DepArtment is an office for cultural management in the performing arts, directed by Katharina von Wilcke and Harriet Lesch. DepArtment was founded in 1995 since then working in the fields of programming, production dramaturgy, management, project organisation and communication for individual artistic projects, events and festivals.

**DRAMATURGISCHE GESELLSCHAFT E.V. (DG)**

Tel.: +49-(0)30-77 90 89 34  
www.dramaturgische-gesellschaft.de, post@dramaturgische-gesellschaft.de  
Contact: Suzanne Jaeschke  
The dramaturgy society is a network for both theatre producers and experts from arts, science and political institutions. The society aims to enhance the exchange of knowledge and opinions about current aesthetic and socio-political issues.

**EHRliche ARBEIT – FREIES KULTURBÜRO**

Tel.: +49-(0)30-39 20 21 40, Fax: +49-(0)30-69 08 85 71  
www.ehrlichearbeit.de, post@ehrlichearbeit.de  
ehrliche arbeit are Anka Belz, Janina Benduski, Mareike Holtz, Sandra Klöss, Andrea Oberfeld, Elena Polzer and Ilka Rümke. ehrliche arbeit is German for “honest work” and was founded in Berlin in 2006 as a platform for independent performing arts projects. We offer consultancy in concept and project development as well as project and production management, press and public relations, dramaturgy and text and translation work.

**GROTEST MARU**

Tel.: +49-(0)179-2058948  
www.grotest-maru.de, grotestmaru@grotest-maru.de  
Contact: Ursula Maria Berzborn  
Grotest Maru creates theatre pieces in public spaces and is inspired by visual, physical and object theatre, as well as installation and land art. It was founded in 1996 at Kunsthaus Kule and has been touring as a company since 1999. They specialize in developing projects for urban spaces or landscapes.



**INTERNATIONALES THEATERINSTITUT – ZENTRUM BR DEUTSCHLAND (ITI)**

Tel.: +49-(0)30-61 10 76 5-0, Fax: +49-(0)30-61 10 76 5-22  
www.iti-germany.de und www.theaterderwelt.de, info@iti-germany.de  
Contact: Dr. Thomas Engel  
The German Centre of the International Theatre Institute (ITI) is part of a worldwide network of more than 90 national ITI centres and focuses on international exchange between dance and theatre. ITI Germany provides information and counselling, organizes international symposia and workshops, and, most importantly, the triennial festival THEATER DER WELT.

**KOSTÜMKOLLEKTIV E.V.**

Tel.: +49-(0)30-61 67 10 57  
www.kostuemkollektiv.de, kontakt@kostuemkollektiv.de  
Fundus opening times: Tues. 10-13 + 14-18, Thurs. 10-14, Fri. 14-18, Sa. 12-15  
Contact: Silvia Albarella, Muriel Nestler, Anke Redlitz-Daus a.o.  
Kostümkollektiv offers projects and workshops for children and adults and administers the collective costume fundus for the independent performing arts and cultural education scene.

**LUFTTANZ THEATER**

Tel.: +49-(0)30-441 65 48  
www.lufttanz.com, info@lufttanz.com  
Contact: Nadia Meinhardt  
The Lufttanz Theatre exists since 2005 as an international artists network for performing arts. Their Berlin production office is managed by Nadia Meinhardt, who has an MA in digital communications and is a qualified stage acrobat and cultural worker. It's multidisciplinary approach combines acting, dance, circus arts, new media and lighting (illumination) in visual site and theme-specific productions.

**LANDESVERBAND FREIE THEATERSCHAFFENDE – (LAFT) BERLIN E.V.**

Tel.: +49-(0)30-54 59 16 00  
www.laft-berlin.de, info@laft-berlin.de  
Contact: Anne Passow  
LAFT is a local umbrella association, which represents the interests of professional independent theatre makers and performing artists in Berlin. Its goal is to strengthen the lobby for independent theatre and dance, improve cultural policies, facilitate communication and networking, further discourse and develop further qualification possibilities for professionals.

**MIME CENTRUM BERLIN**

Tel.: +49-(0)30-61 10 76 520  
www.mimecentrum.de, info@mimecentrum.de  
Coordination: Thilo Wittenbecher  
Mime Centrum is an information and documentation centre as well as working space for dance and theatre makers. The media library is open to the public and provides a good overview of national and international developments with more than 6.000 video and DVDs. Workshop programs and a daily movement training is available for actors, dancers and all interested in performing arts.



**NORDWIND**

Tel.: +49-(0)30-54 59 22 20  
www.nordwind-festival.de, r.ciontos@nordwind-festival.de  
Contact: Ricarda Ciontos  
NORDWIND is a platform and festival for performing arts & music stemming from Nordic and Baltic countries. NORDWIND presents some of the most outstanding representatives of the Nordic contemporary art scene since 2006. NORDWIND contributes to an ever increasing exchange between nordic and German artists.

**SEIDENSPUR E.V.**

Tel.: +49-(0)30-68 07 30 23  
www.seidenspur.de, post@seidenspur.de  
Contact: Christine Vogt  
Seidenspur is a registered association for the promotion of intercultural dialogue via interdisciplinary arts projects. It focuses on ethnic diversity and alternative ways of life, such as living with disabilities, and initiates pilot projects for people affected by dementia.

**SHE SHE POP**

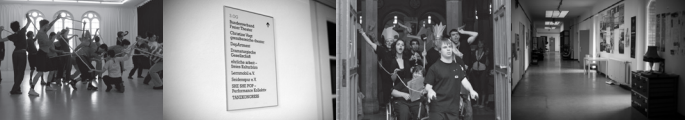
Tel.: +49-(0)30-97 00 52 68  
www.sheshipop.de, buero@sheshipop.de  
Contact: Elke Weber, Elisabeth Lucassen  
She She Pop is a performance collective based in Berlin and Hamburg. Founded in 1998 by graduates from the applied theatre studies course in Giessen, She She Pop currently has seven permanent members: Sebastian Bark, Johanna Freiburg, Fanni Halmburger, Lisa Lucassen, Mieke Matzke, Ilia Papatheodorou and Berit Stumpf.

**STUDIO 142 – HANNA HEGENSCHIEDT**

Tel.: +49-(0)30-53 67 46 76  
www.hannahegenschiedt.de, mail@hannahegenschiedt.de  
Studio 142 is a rehearsal space for dance, theatre and performance and offers daily courses in Klein Technique™.

**TANZKONGRESS**

Tel.: +49-(0)30-40 50 59 89, Fax: +49-(0)30-40 50 59 86  
www.tanzkongress.de, zentrale@tanzkongress.de  
Directors: Sabine Gehm & Katharina von Wilcke  
Tanzkongress (The Dance Congress) is a major international forum in which dancers, choreographers, pedagogues, scientists, and producers present and reflect upon current developments in stage, dance in theory and practice. Initiated by the Kulturstiftung des Bundes (German Federal Cultural Foundation), the first Tanzkongress took place in 2006 in Berlin and the second in 2009 in Hamburg. As of 2013, Tanzkongress will be organized every three years at different locations in Germany.



**TIÖR – BUNDESVERBAND THEATER IM ÖFFENTLICHEN RAUM E. V.**

Tel.: +49-(0)179-2058948  
info@theater-im-oeffentlichen-raum.de, www.theater-im-oeffentlichen-raum.de  
Director: Clair Howells, Contact: Ursula Maria Berzborn  
The Bundesverband Theater im Öffentlichen Raum (Federal Theatre in Public Space) represents theatre producers from this genre nationwide and acts as political and media speaker and contact partner. It is committed to funding and development of theatre in public space as fundamental aspect of contemporary performance art and works closely with BUFT e.V and MIME CENTRUM as a documentation venue.

**TEATRO SÓ**

Tel.: +49-(0)151-15386239  
Contact: Sérgio Fernandes  
www.teatro-so.com , info@teatro-so.com  
Teatro Só tells stories without words, using visual poetry. Taking a multi-disciplinary approach, it combines corporeal and image theatre, installation, circus arts, masks and music.

**ZEITGENÖSSISCHE TANZ BERLIN E.V. (ZTB)**

Tel.: +49-(0) 30-37 44 33 93  
www.ztbberlin.de  
The ZTB looks after the interests of choreographers, dancers, companies and dance institutions in Berlin. By means of political initiatives, it implements urgently required improvements and opportunities in production and presentation.

**FURTHER ARTISTS, GROUPS/ASSOCIATIONS IN THE KUNSTQUARTIER:**

Achtung Studio, andcompany&Co./Transfiction, Ivan Bazak/Karpatentheater, Drumline Berlin, Globe e.V./Alexander Würtz, Gonzalo Oyarzun-Riveros & Troupe de la Lumière, Raumfahre Studio, Egill Saebjörnsson, u.a.

**ART SPACES**  
**ASSOCIATIONS**  
**CONCERTS**  
**CONSULTANCY**  
**CULTURAL AND MUSICAL**  
**EDUCATION**  
**EVENTS**  
**EXHIBITIONS**  
**GASTRONOMY**  
**INFORMATION**  
**MEDIATHEQUE**  
**OPEN-AIR CINEMA**  
**REHEARSAL SPACES**  
**STUDIOS**  
**WORKSHOPS**  
**WORKSPACES**  
**AND MORE...**

Current information and contact: [www.kunstquartier-bethanien.de](http://www.kunstquartier-bethanien.de)

As of: January 2013

Published by FB Kultur und Geschichte des Bezirksamtes Friedrichshain-Kreuzberg,  
Kunstraum Kreuzberg/Bethanien  
Editors: Stéphane Bauer, Anke Schuster, Thilo Wittenbecher  
Layout: Stéphane Bauer  
Photo of facade: Maxim Wittenbecher, all other photos: Birgit Richter, Stéphane Bauer a.o.

**ART CENTER**

**KUNSTQUARTIER**

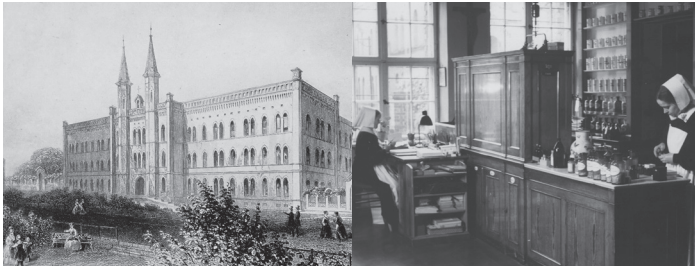
**BETHANIE**

**MARIANNENPLATZ 2 10997 BERLIN**



## Bethanien - 1847 until now

1845-1847	Built by Theodor Stein in accordance with Ludwig Persius' architectural plans to be a deaconess institute with a teaching hospital.
1847	Officially opened by Bishop Neander on 10th October.
1848	Revolution in Berlin: Battle in the fields of Köpenick. Theodor Fontane works as a pharmacist in Bethanien.
1851	Trust formed under the governance of the evangelical church. Construction of the morgue and chapel.
1857	Construction of the access yard and stalls.
1869	Crisis: Over 900 patients die after surgical interventions following fire in the hospital and traumatic fever.
1878	Construction of the recreational house for the deaconesses.
1882	Construction of the children's home at Seebad Heringsdorf.
1894	Completion of the Martha-Maria house, a preparatory school for the deaconesses.
1899	Construction of the isolation barracks. Shortage of young deaconesses, with remaining deaconesses overworked at the turn of the century.
1912	Foundation of the seminar for Christian nursery nurses. Pedagogical work is a further focal point.
1914-1918	As in 1870/71 the deaconesses are employed as military hospital nurses. Bethanien suffers from difficulties in receiving supplies.
1929-1930	Construction of the large seminar house for youth guidance assistants as a household school, nursery and crèche.
1930	Construction of the „Tabea“ house (training and nurses accommodation)
1933	Management of Bethanien ignores the demands of the Nazi party to assign managerial positions to party members.
1941	The Gestapo orders the seizure of the seminar house. Installation of a military nursing home for the blind. Lack of personnel: Many doctors have been ordered to serve at the front.
1943	Bomb attack, some damages.
1945	Air-raid leaves heavy damages. Rationing of food provisions.
1945/47	Partial reconstruction.
1950/51	The large south wing is renovated.
1966	Bethanien almost closes: The number of patients and nurses from the Eastern sector is greatly reduced and the hospital cannot pay its debts.
1968	The building is in line for demolition.
1969	Following protests, Bethanien gains protected building status. Architect Kressmann-Zschach puts forward her renovation plans: Only the main building should remain standing and should be surrounded by tower blocks and homes for the aged. There is a storm of property speculation from which protests arise, most of all on the side of the German Architects Association (Bund Deutscher Architekten).
1970	Hospital closure. The church sells the building for 10.5 million Deutschmarks to the state. Public controversy follows concerning the use.
09.12.1971	Squatting of the former Martha-Maria house – a building adjacent to Bethanien. The squatters rename the house as „Georg-von-Rauch-Haus“. Along with the Berlin Senate, they agree to its legal use as a youth residential project. On the 19th April 1972 there is a raid in the ‚Rauch‘ house. The band „Ton Steine Scherben“ sings about it in the song ‚Rauch-Haus-Song‘. The main Bethanien building itself is not, as general myth would have it, inhabited by squatters.
1973	Bethanien reopens as a cultural and social centre with the „Künstler-



	haus Bethanien gGmbH“ studio and exhibition program, the BBK Kulturwerk Berlin printmakers' workshop, the Kreuzberg music school and the communal gallery „Kunstamt Kreuzberg“, a senior citizens' meeting point, the Namik-Kemal library, seminars for teachers and a social welfare office.
1975	Exhibition „Mehmet came from Anatolia“. The director of Kunstamt Kreuzberg in the ‚Mariannenplatz house‘ is Dieter Ruckhaberle.
1977	Exhibition „Theatre in the Weimar Republic“ and „Nazim Hikmet“. Krista Tebbe becomes director of the Kunstamt Kreuzberg.
2000	Christoph Tannert becomes managing director of Künstlerhaus Bethanien gGmbH, taking over the functions of the founder, Michael Hårdter.
2002	Namik-Kemal library moves to the central library
2003	Exhibition: „Backjumps – The Live Issue“. Stéphane Bauer becomes director of the Kunstraum Kreuzberg/Bethanien.
2004	Scandal surrounding the exhibition „When love turns to poison“
2004	Closure of the senior citizens' meeting place
2005	Social welfare office vacates the 1st +2nd floor of the south wing
11.06.2005	The 1st and 2nd floor of the south wing is squatted by the „York59“ housing project
06.07.2006	Successful petition for a referendum by the ‚Initiative Zukunft Bethanien‘ group (IZB - future of Bethanien). Initiation of ‚round table‘ discussions for developing a utilisation concept.
01.05.2009	The GSE (Gesellschaft fuer StadtEntwicklung gemeinnuetzige GmbH, Treuhänder Berlins - non-profit NGO for town development) takes over the management of the Bethanien. Core users are and remain the Kunstraum Kreuzberg/Bethanien, the BBK Berlin printmakers workshop and the Friedrichshain-Kreuzberg music school. The tenants of the housing project „NewYork59“ remain in the south Wing, which now has it's own separate postal address, and continues to further support social, political and cultural projects.
28.05.2010	(Re)opening of a café/restaurant in the former casino by Michael Böhl and Wolfgang Sinhart with the name „3Schwestern“ (3 Sisters)
30.06.2010	Künstlerhaus Bethanien gGmbH moves to Kohlfurter Straße
01.09.2010	Inclusion of the studio program by the state of Berlin
05.09.2011	First stipend awardee of the Tokyo Wonder Site Berlin Residency begins his residency in Bethanien
08.09.2011	Inauguration of „Performing Arts in Bethanien“ in the presence of Bernd Neumann, state minister for culture and media



## THE HISTORY OF BETHANIE

The central deaconess institute ‚Bethanien‘ was constructed during the years 1845-47, commissioned by the pious King Friedrich Wilhelm IV. In 1843 he reintroduced the Society of Our Lady (Order of Swan). One of his tasks was to construct an institute for educating nurses and carers. Persius came up with the first designs for the deaconess institute. Following Persius' death, his colleague Stein took over construction management under the direction of Stüler, a student of Schinkel. Following Stein's revised plans, a wide horseshoe shaped complex was created. When, in accordance with his instructions, the house was handed over for use in October 1847, it lay just inside of the city border in the midst of gardens and rye fields. Just 50 years on, around the turn of the century, Bethanien and the park designed by Lénne were embedded within a dense city structure. The hospital remained in use until 1970. A vehement „Battle of Bethanien“ began when the hospital was closed down in 1970. The planned demolition of much of the institution and the reconstruction, which included the construction of social housing projects, was hindered by squatters, citizens' initiative groups and historic building conservationists. Since 1973 it is predominantly cultural, artistic and social institutions working in the main building.

## THE HISTORIC THEODOR-FONTANE PHARMACY

Tel.:+49-(0)30-90 298-14 63 oder +49-(0)30-50 58-52 33  
Opening hours: Tuesday and Thursday 2-7 pm. Guided tours on request  
Director: Martin Düswohl. A facility of the district museum.  
The hospital pharmacy where Theodor Fontane worked between 1848 and 1849 training nurses as pharmacists has been preserved in its original state. Some of the vessels have, however, been replaced by a modern inventory.



## FRIEDRICHSHAIN-KREUZBERG MUSIC SCHOOL

Tel.:+49-(0)30-90 298-14 31, Fax.: 90 298-14 35  
www.ms-fk.de, musikschule@ba-fk.verwalt-berlin.de  
Consultation times: Tuesday, 10-12 am; Thursday 2-6 pm  
Director: Ina Finger  
The Friedrichshain-Kreuzberg music school is one of the largest communal music schools in Berlin. The teaching program ranges from initial contact sessions for parent/children groups (taster courses) to targeted preparation for further music studies. There are lessons in almost all types of instruments, in classical music as well as within the field of jazz, rock, pop and non-European music. Aside from individual or group lessons, there are advanced courses to acquire and deepen theory, listening and musicology knowledge, amongst other things. There is a chance to play in diverse ensembles, such as chamber orchestras, big bands, diverse choirs, ensembles for early music, 20th century classical music ensembles and dance amongst many other formats. The multifaceted events take on all sizes, from small (scholar presentations) to larger scale events, displaying the high level of musical education available at the music school that ultimately succeeds in enriching the musical and cultural ambience of the district.

## KUNSTRAUM KREUZBERG/BETHANIE

Tel.:+49-(0)30-90 298-14 55, Fax: +49-(0)30-90 298-14 53  
www.kunstraumkreuzberg.de, bethanien@kunstraumkreuzberg.de  
Opening hours: Daily 12 -7 pm  
Director: Stéphane Bauer  
Kunstraum Kreuzberg/Bethanien presents group shows and topical exhibitions that deal with cutting edge social and cultural processes and their relation to contemporary art. Central aspects here include the contextualisation of projects that take diversity, internationality and local issues into consideration.  
With an exhibition area of 450 square metres and over 200 metres of hanging space, the rooms fulfil the spatial requirements for medium-sized shows. Around six exhibition projects are realised per year, currently in collaboration with cooperative institutions, curators or artist groups. The exhibitions are accompanied by guided tours, films, discussions and artists' talks. Kunstraum Kreuzberg/Bethanien is a facility of Friedrichshain-Kreuzberg district council.



## BBK BERLIN PRINTMAKERS' WORKSHOP

Tel.: +49-(0)30-61 40 15-70, Fax: +49-(0)30-61 40 15-74  
www.bbk-kulturwerk.de, druckwerkstatt@bbk-kulturwerk.de  
Opening hours: Monday 1 - 9 pm; Tuesday - Friday, 9 am - 5 pm  
Director: Mathias Mrowka  
The BBK Berlin's printmakers' workshop was opened in 1955 and was, using public means, developed in 1973 in Bethanien to be open to all artists. It is the most extensive, non-commercial artistic printmakers' workshop worldwide. All known printing techniques such as screen-printing, offset print, etching, woodcutting, lithography and photography can be performed here, as well as combinations of these. Papermaking, bookbinding, catalogue printing and book printing, are also available. The BBK Berlin printmakers' workshop is open to all artists. A price-list for material and additional services can be made available on request at the appropriate department.

## MEDIENWERKSTATT DES bbk berlin

Tel.: +49-(0)30-55 14 72 94, Fax: +49-(0)30-61 40 15-74  
www.medienwerkstatt-berlin.de, medienwerkstatt@bbk-kulturwerk.de  
Opening hours: Monday – Friday, 10am - 5pm and by appointment  
Director: Lioba von den Driesch  
The publically funded media workshop opened in 2009 and offers infrastructure and skill-building for fine artists creating media art works. The workshop is available for any artist to use. Equipment includes five differently equipit digital workspaces (Mac) and a Greenbox for audio and video recordings as well as post-production. Analogue technologies are also available. 2D and 3D animation as well as interactive media projects can be realised in the workshop.  
Prices range from day, week and project rates. The pricelist can be found in the workshop or at www.medienwerkstatt-berlin.de.

## PROJEKTRAUM AND STUDIO1

Tel.: +49-(0)30-49 30 63 37, Fax: +49-(0)30-49 30 63 33  
www.kunstquartier-bethanien.de, info@kunstquartier-bethanien.de  
Contact: Anke Schuster  
The former library in Bethanien (ground floor, ca. 220M2, 6 adjoining rooms) has been used sporadically for exhibitions since the closure for the Namik Kernal Library at the end of 2002. As of 1st May 2009, this room can be rented for public exhibitions and events under the name ‚Projektraum‘. Studio1 (660m2 on the 1st and 2nd floor), known as the former chapel of Bethanien, is also available to rent  
The Mieterrat AG decided in collaboration with GSE to rent out these spaces. Priority is given to the following types of projects and exhibitions: curated or concept related group exhibitions; curated thematic projects and exhibitions; exhibitions by art schools; results of cultural education projects.  
Entrance to the exhibitions should be free and you are invited to send you project ideas to us via Email.

## MOMENTUM

Tel.: +49-(0)1520-2074784  
www.momentumworldwide.org, rachel@momentumworldwide.org  
Opening hours: Mittwoch bis Sonntag 13 bis 19 Uhr  
Director: Dr. Rachel Rits-Volloch  
MOMENTUM is a global platform for time-based art, including a Gallery, Salon, Collection, Residency, Public Art initiative, and worldwide Network. By enabling exhibition, discussion, collection, creation, and exchange, as the world speeds up, and time itself seems to flow faster, MOMENTUM explores how time-based art reflects the digitization of our societies and the resulting cultural change.



## KÜNSTLERINNEN DES ATELIERPROGRAMMS

www.kunstquartier-bethanien.de/atelierprogramm.html und  
www.bbk-kulturwerk.de, atelierbuero@bbk-kulturwerk.de  
Tel.: +49-(0)30-23 08 99 20  
The studios are not open to the public and can only be accessed in agreement with the artists themselves.  
The Berlin studio programme, developed by the BBK Berlin Kulturwerk Atelierbüro in cooperation with the Berlin Senate and partners, currently has over 830 funded, rent- and occupancy-controlled studios and studio flats. Since the 1st of September 2010, 16 of those studios are in Kunstquartier Bethanien, and are allocated as part of the studio programme.  
The studios are allocated for longer terms. Info: www.bbk-kulturwerk.de, atelierbuero@bbk-kulturwerk.de , Tel: 030-23 08 99 20  
Current artists are:  
Özlem Altin, Tania Bedrinana, Henning Bohl, Thomas Bratzke, Agnieszka Brzezanska, Daniela Comani, Brad Downey and Matthew Murphy, Annette Hollywood, Eunji Kim, Achim Kobe, Karoline Koeppel, Marisa Maza, Stephanie Mohnhaupt, Andrea Pichl, Gabriela Volanti, Nasan Tur

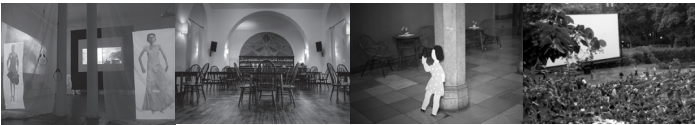
## TOKYO WONDER SITE BERLIN – RESIDENCY

Tel.:+49-(0)30-90 298-14 55, Fax: +49-(0)30-90 298-14 53  
www.kunstquartier-bethanien.de/tokyowondersiteberlin.html und www.tokyo-ws.org, tws-berlin@kunstraumkreuzberg.de  
Contact: Stéphane Bauer and Kanta Kimura  
The city of Berlin and the Tokyo Metropolitan Government have arranged artist exchanges in the framework of artist residencies since 2011. Japanese artists can apply directly at Tokyo Wonder Site and Berlin-based artists can apply to the Senate of Culture. Since 2011 one artist from Tokyo is resident at Kunstquartier Bethanien for 3 months at a time.



## CAMERA AUSTRIA INTERNATIONAL (GRAZ/BERLIN)

Tel.: +49-(0)30-33 00 81 91  
www.camera-austria.at  
Contacts: Maren Lübke-Tidow, Rebecca Wilton  
The magazine ‚Camera Austria International‘ (DE/EN) is dedicated to the role of photography as both an art and mass-media form at the intersection of aesthetics and social praxis, between document and discourse, politics and image. The editorial office is situated in Kunstquartier Bethanien. An exhibition space and public library for photographic history and theory has been situated in Graz, Austria, since the 1970s.



## FREILUFTKINO KREUZBERG

www.freiluftkino-kreuzberg.de, kreuzberg@pifflmedien.de  
Management: Piffl Medien GmbH, Season: May - August  
The open air cinema Kreuzberg has been located in the inner yard of the Kunstquartier since 1994. Piffl Medien GmbH took over management in 2004, and it is the only open air cinema to present original films with subtitles. Between the months of May and August a new film is shown daily. In 2012 the area was completely renovated – in cooperation with the district council, new toilets and a gastronomic venue were installed and technical capacities were improved. The programme can be found here: www.freiluftkino-kreuzberg.de

## Café/Restaurant „3SCHWESTERN“

Tel.: +49-(0)30-60 03 18 60 13  
www.3schwestern-berlin.de, boehl@3schwestern-berlin.de  
Opening hours: Tuesday - Sunday, from 11 am  
Proprietor: Michael Böhl and Wolfgang Sinhart  
The café/restaurant ‚3Schwestern‘ (3Sisters) is located in Bethanien's former nurses cafeteria and includes an beer garden in the yard and the ‚Eiscafe Kleine Schwester‘ (Ice cream parlour ‚little sister‘) at the entrance. Here you can find a diverse selection of food and drinks and on occasion also concerts, live acts and evening events.